

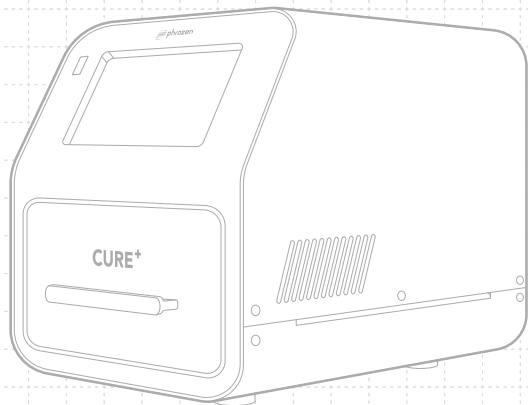


CURE+



Dear User,

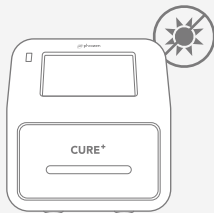
Thank you for joining us. Please read the CURE+ manual thoroughly and follow the instructions step by step to ensure the best user experience.



01 Key Notes	02	03 Get Started	05
· Operating Environment	02	04 Curing	06
· Safety Notes	02	· Cure with Brand Resins Mode	06
· Cleaning Instructions	02	· Cure with Modules Mode	06
02 Introduction	03	· Add Profiles in Modules	07
· Product parts	03	· Delete Profiles in Modules	08
· Accessories	04	· Cure with Manual Mode	08
· Specifications	04	05 Settings	09
		· Update Brand Resins List / Firmware	09



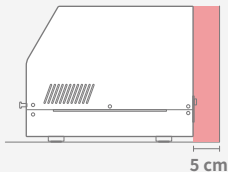
01 Key Notes



Operating Environment

Place the CURE+ on a flat, dry, and well-ventilated surface. Avoid direct sunlight, high temperatures, or environments with frequent vibrations.

10 ~ 40°C | 50 ~ 104°F | < 80 %



Ensure a **5 cm** clearance at the back of the machine for effective heat dissipation from the rear fan.

Safety Notes

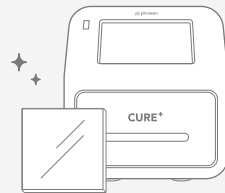
Wear personal protective equipment (gloves, masks, goggles, and long-sleeved clothing) during the curing process.



Avoid touching the internal components of the machine when removing objects to prevent burns.

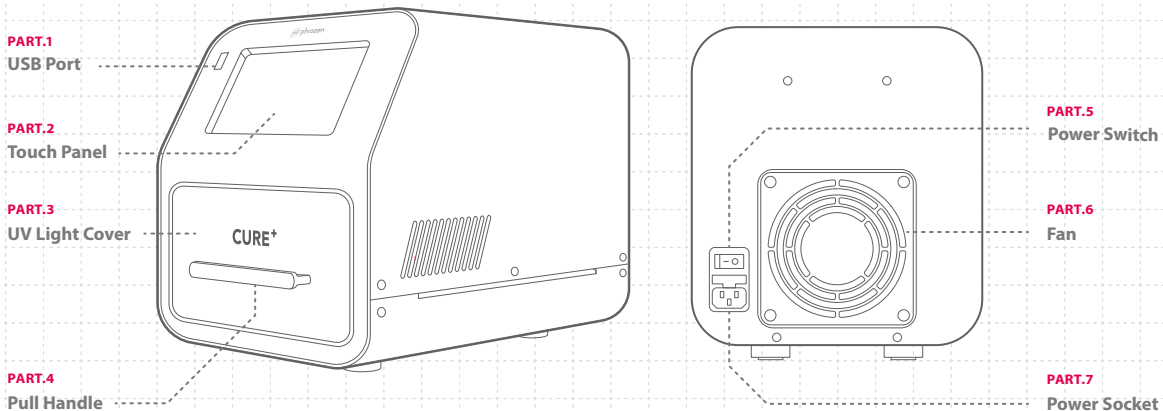
Cleaning Instructions

It is recommended to use 95% alcohol and a paper towel to carefully wipe the machine and the glass.



02 Introduction

Product parts



Accessories



Warranty Card



Glass



Power Cord



USB

Specifications

System Specifications

Operating Interface	5-inch touch panel
Light Source	Top and bottom light sources Wavelengths: 365, 385, and 405 nm (non-adjustable)
Power Requirement	100-240V AC ; 50-60Hz
Rated Power	150W

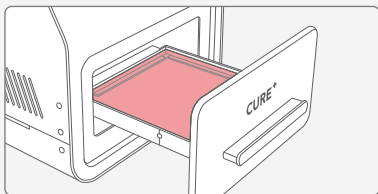
Hardware Specifications

Machine Dimensions (W x D x H)	23 x 33.8 x 26.1 cm
Internal Curing Space (W x D x H)	12 x 12 x 5 cm
Weight	7 kg

* All specifications were tested in a laboratory and are subject to change without prior notice. For the latest update, please refer to Phrozen's official website.

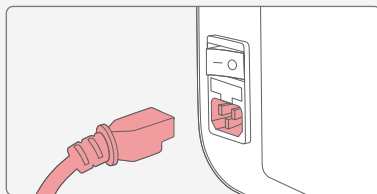
* The included power cord set packaged with the main unit cannot be used with electrical equipment other than the specified device.

03 Get Started



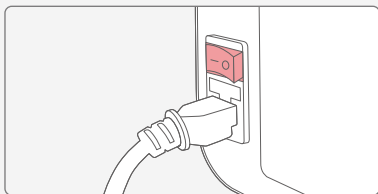
1 Place the Glass

Take the glass from the foam and place it onto the holder.



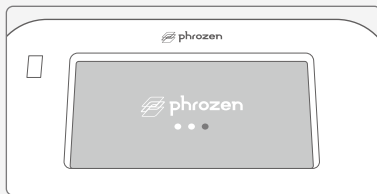
2 Connect the Power Cord

Plug the Power Cord into the machine.



3 Turn On the Power Switch

Flip the power switch from the "O" position to "—".

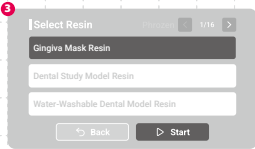
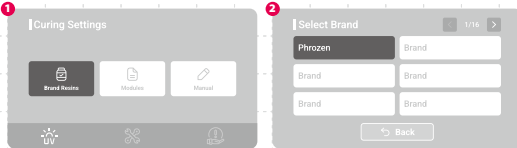


4 After turning on the power, the touch panel will light up and enter the startup screen.


04 Curing

Cure with Brand Resins Mode

- 1 Select the "Brand Resins"  mode.
- 2 Choose the resin brand.
- 3 Once selected the resin, tap "Start" in the bottom-right corner to begin curing with the preset profile for that resin.



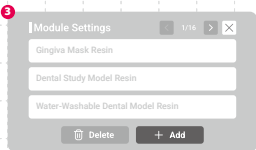
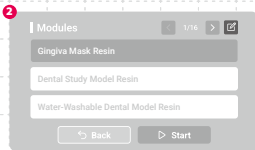
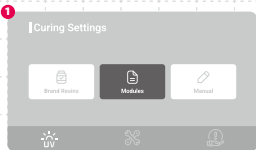
Cure with Modules Mode

- 1 Select "Modules" .
- 2 Choose a saved curing profile for your custom curing needs. Tap "Start" in the bottom-right corner to begin.

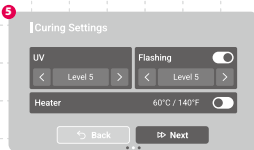


Add Profiles in Modules

- 1 Select "Modules".
- 2 Tap the "Edit" button in the top-right corner.
- 3 Tap "Add" to create a new curing profile.
- 4 Name the profile.

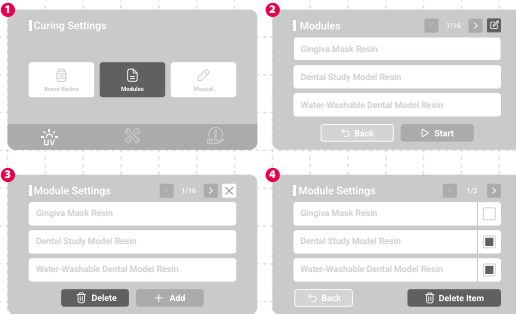


- 5 Adjust the curing parameters as follows:
 - **UV (light intensity)**
Adjust the UV light intensity from LEVEL 1 (20%) to LEVEL 5 (100%).
 - **Flashing**
Enable this function to prevent uneven curing. You can set the flashing frequency from Level 1 (highest) to Level 4 (lowest), or disable the function for continuous light.
 - **Heating**
When enabled, the machine will heat up to 60 °C / 140 °F before starting the curing process.
*Waiting time for heating may differ depending on the ambient temperature.Once the settings are complete, click "Next".
- 6 Set the curing time and click "Save", the curing profile will be saved in modules.




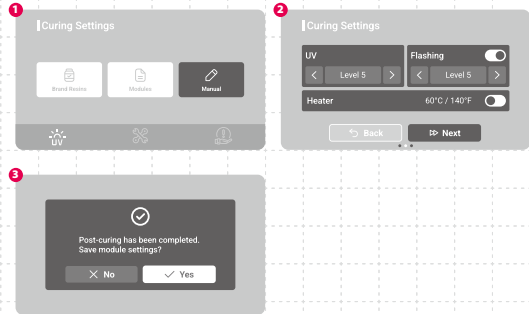
Delete Profiles in Modules

- 1 Select "Modules". 
- 2 Tap the "Edit" button  in the top-right corner.
- 3 Select "Delete" below.
- 4 Select the file and choose "Delete Item" to delete it.



Cure with Manual Mode

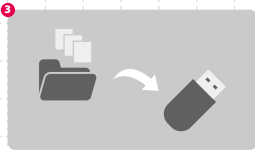
- 1 Select "Manual Mode". 
- 2 You can manually adjust the curing parameters here. Afterward, follow the same steps as "Add Profiles in Modules".
- 3 After curing, you can choose whether to save the settings as a new profile or discard them.



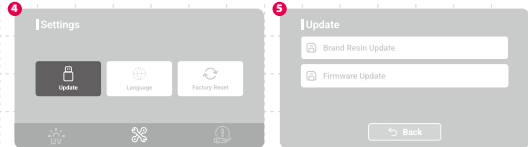
05 Settings

Update Brand Resins List / Firmware

- 1 It is recommended to use 3.2 Gen1, 32 GB size USB, and format the USB to FAT32.
- 2 Download the firmware or resin list update file for CURE+ from the [Firmware downloads Page](#).
- 3 Unzip the .rar file into the root folder of the USB.



- 4 Plug the USB, and select "Update".
- 5 Select the items you want to update and click "Start".
- 6 CURE+ will automatically reboot after the update.
- 7 Once complete, you can use the new firmware.



After-Sales Service & Warranty

- Phrozen offers a one-year warranty for CURE+.
- If you have any questions while using CURE+, please scan the QR code to visit the Phrozen Help Center, where you can find helpful product guides or get in touch with our support team.



Phrozen Dental
Help Center

Congratulations!

You have just completed your first run.
We hope you've had a great experience!

Please follow Phrozen's social media accounts
to learn more about printing tips and share
information with the community.



Facebook



Facebook Group



Instagram



**Phrozen Dental
Official Website**



YouTube